



Helping you get the most from your benefit plan

The Small Group Benefit Experts - for groups of two or more

4551 W. 107th Suite 100
Overland Park, KS 66207
800.825.7531

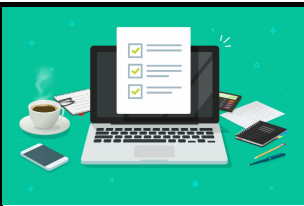
Employer Benefit Adviser

February 2025

[Self-Service Site](#)

[Employers Home Page](#)

[Member Resources](#)



What to Know This Month

Here's a sneak peek at the highlights in this issue:

1. Kickstart Your Health Journey in 2025!
2. SavePlus Starts Now
3. Discover the Benefits of CompassConnect
4. New Year; New Deductible

Kickstart Your Health Journey in 2025!

If improving your health was your New Year's resolution, Allied's HealthCare Assistant can help. With your Funding Advantage health plan, you and your employees have access to GEMCORE's On-Goal program. This program offers:

- Personalized plans with a registered dietitian
- Educational resources on diet and exercise
- Flexible scheduling
- Help setting and achieving health goals
- Motivation and accountability



Reach out to Allied HealthCare Assistant at 844-287-6078 to start your journey towards better health or click the button below to learn more.

[Allied HealthCare Assistant](#)

SavePlus Starts Now

As Funding Advantage Plan members, you and your employees automatically get the lowest market price for prescription medications through SavePlus, powered by Liviniti.

You don't have to do anything! SavePlus finds lower medication prices and applies those discounts directly at the counter.

Call Client Services at 800-825-7531 if you have questions or check out the flyer on the right.



Discover the Benefits of CompassConnect

If you're enrolled in one of our Freedom health plans, you have access to CompassConnect. This powerful tool helps you and your employees find medical providers in your area who are friendly to reference-based pricing.

Why Use CompassConnect?

With CompassConnect, you can:

- **Identify Reference-Based Pricing Friendly Providers:** Easily find providers who accept reference-based pricing.
- **Specialized Care Information:** Discover if a provider specializes in a particular type of care.
- **Comprehensive Provider Details:** Access the provider's location and contact information.

How to Get Started

To register for CompassConnect, you'll need:

- **Your Member ID**
- **Group Number**

Need Assistance? If you or your employees have any questions, our Elite Experience Team is ready to help. Call us at **866-332-1987**.

CompassConnect

Reminder: New Year; New Deductible



Don't forget to remind your members that with the start of a new year, a new health benefit deductible will apply – even if your group plan follows a different plan year.

A deductible is the amount a member pays out of pocket for covered medical expenses before their coverage begins to contribute. After reaching their deductible, their plan typically starts covering a portion of their medical costs.

[View as Webpage](#)



CONNECT WITH US!



Allied National | www.alliednational.com

017s0225

Allied National | 4551 W 107th St Suite 100 | Overland Park, KS 66207 US

[Unsubscribe](#) | [Update Profile](#) | [Constant Contact Data Notice](#)